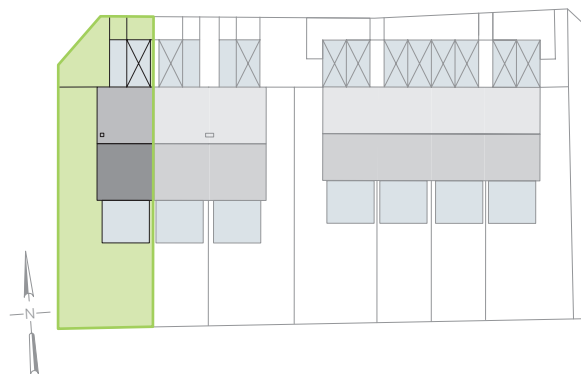
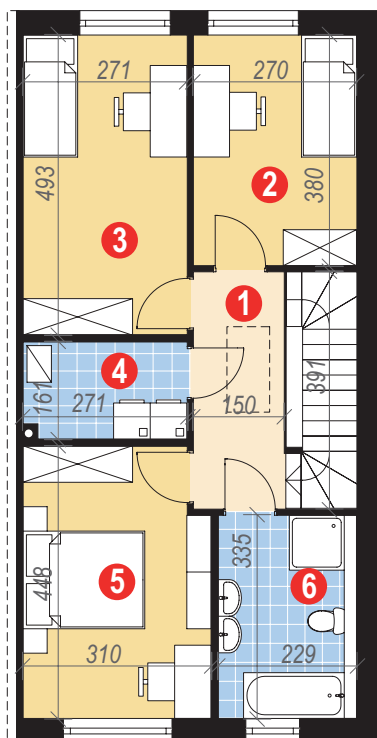
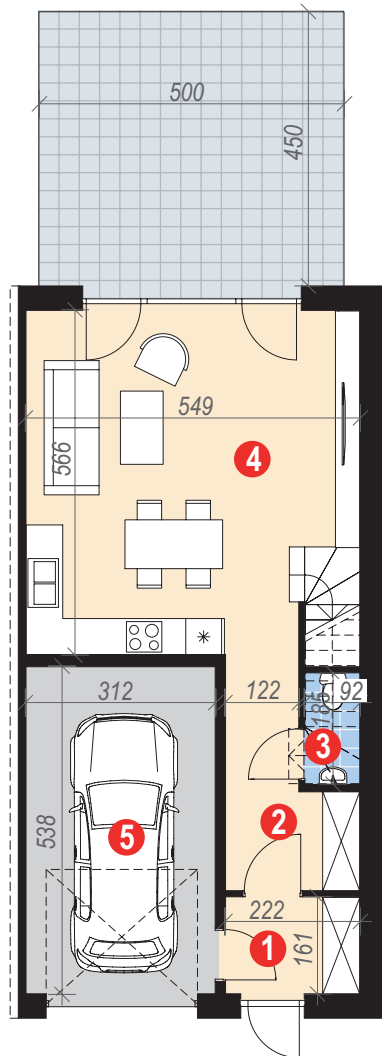


# ZIELONY MROZÓW

BUDYNEK II, LOKAL A

POWIERZCHNIA 110,78 m<sup>2</sup>  
OGRÓD 216,03 m<sup>2</sup>



## Parter 56,56 m<sup>2</sup>

1. wiatrołap	3,50 m <sup>2</sup>
2. hall	6,26 m <sup>2</sup>
3. wc	1,23 m <sup>2</sup>
4. pok. dzienny + kuchnia	28,95 m <sup>2</sup>
5. garaż	16,62 m <sup>2</sup>

## Poddasze 54,22 m<sup>2</sup>

1. hall	5,80 m <sup>2</sup>
2. sypialnia	10,13 m <sup>2</sup>
3. sypialnia	13,21 m <sup>2</sup>
4. pralnia	4,22 m <sup>2</sup>
5. sypialnia	13,30 m <sup>2</sup>
6. łazienka	7,56 m <sup>2</sup>

