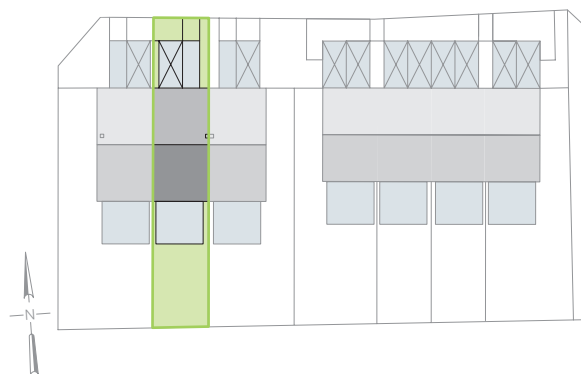
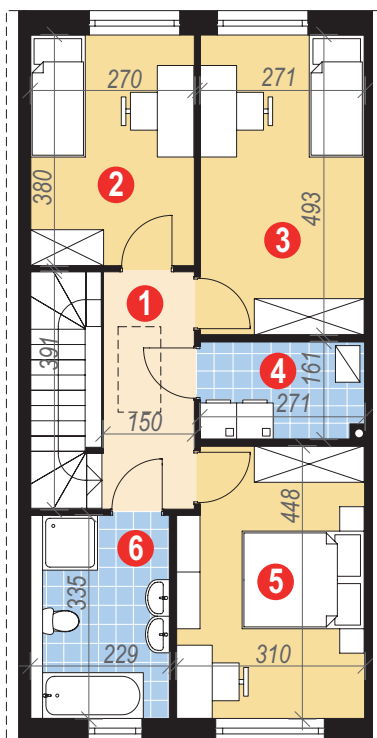
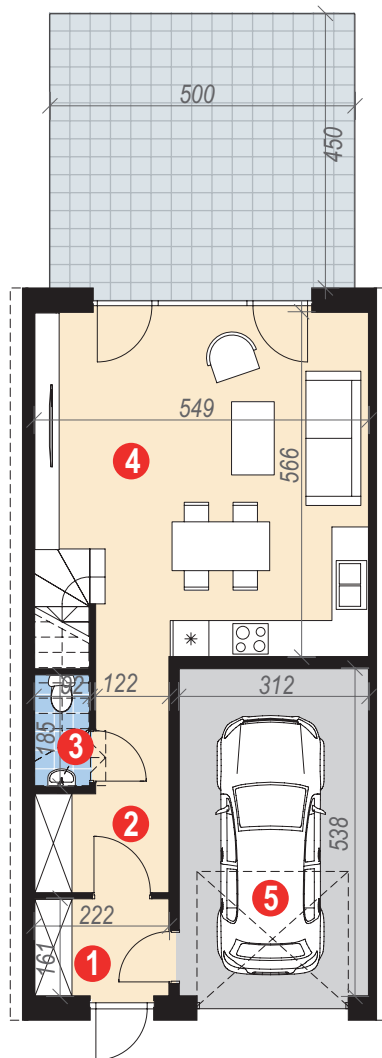


ZIELONY MROZÓW

BUDYNEK II, LOKAL B

POWIERZCHNIA 110,78 m²

OGRÓD 88,40 m²



Parter 56,56 m²

1. wiatrołap	3,50 m ²
2. hall	6,26 m ²
3. wc	1,23 m ²
4. pok. dzienny + kuchnia	28,95 m ²
5. garaż	16,62 m ²

Poddasze 54,22 m²

1. hall	5,80 m ²
2. sypialnia	10,13 m ²
3. sypialnia	13,21 m ²
4. pralnia	4,22 m ²
5. sypialnia	13,30 m ²
6. łazienka	7,56 m ²

